



Community Enterprises  
Serving all of West Hawaii and greater Hawaii County

## VOG (volcanic smog), Hawaii Island's # 1 Health Hazard?

Tonight, February 16th, 2016, 6-8 pm West Hawaii Civic Center, Council Chambers

**BACKGROUND:** *This 2017 opening season of West Hawai'i Forum series will explore the health consequences of long term exposure to volcanic emissions, how topography and trade winds direct vog and create pollution pockets in West Hawaii; how best to live with vog; and explore a new multi-agency vog monitoring reporting tool now available to the public...*

### FORUM PROGRAM GUIDE

<http://www.westhawaiiforum.org>

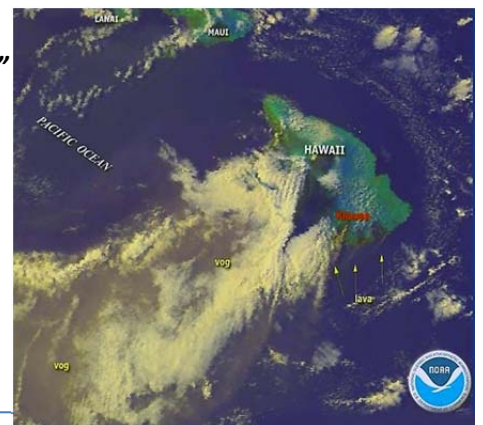
- Call to Order, Boy Scouts Troop 79 Meeting Opening with Pledge

#### 6 pm (Start) - Program and Presentations:

- **Bill Bugbee**, President, Community Enterprises  
10 min – Opening Remarks: CE Acknowledgements, 2017 West Hawaii Forum Season Opening
- **Sherry Bracken**, Moderator  
5 min - Presenter Introductions
- **Tamar Elias**, U.S. Geological Survey, Hawaiian Volcano Observatory (USGS)  
15 min – "**Vog 101**" (presentation title)  
<http://www.westhawaiiforum.org/event/vog/> - all presentations available online after February 24<sup>th</sup>, 2017
- **Dr. Elizabeth Tam**, University of Hawaii, John A. Burns School of Medicine in Honolulu  
15 min – "**It's the Vog! (Or is It?) Respiratory Effects of Volcanic Air Pollution**"  
<http://www.westhawaiiforum.org/event/vog/> - presentation online
- **John Peard**, Hawaii State Dept. of Health (HEER Office)  
15 min – "**Air Monitoring, Advisories, and Public Health Information on Vog**"  
<http://www.westhawaiiforum.org/event/vog/> - presentation online

#### 7 pm (second half) - Audience Q&A:

- **Sherry Bracken**, Moderator and Forum Presenters  
55 min - Audience (moderated) Q&A
- **Bill Bugbee**, President, Community Enterprises  
5 min - Closing Remarks: Looking Ahead



Community Enterprises is an all-volunteer private non-profit organization with a 501c (3) designation from the IRS. Its mission is to bring educational resources to the residents of Hawaii County and enable greater participation in the local and state-wide public policy issues and events that affect the residents of our island community.